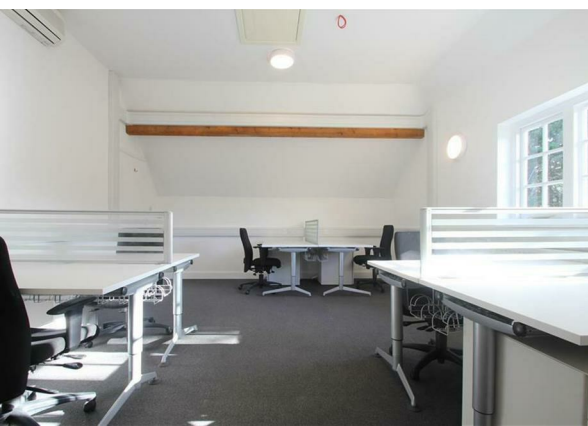


The Woodman Arms Arundel Road, Angmering, West Sussex, BN16

4EU

£950



Commercial office space to rent off A27 near hammerpot Angmering

This remarkable commercial property offers a unique opportunity for businesses seeking a blend of character and functionality. Spanning an impressive 2,755 square feet, this building, which dates back to 1600, boasts a rich heritage that adds to its charm.

Three 1st floor offices are available

Office 1 - 266 Square Foot @ £950 pcm

Office 2 - 169 Square Foot @ £650 pcm

Office 3 - 104 Square Foot @ £550 pcm

In addition to the office spaces, the property includes toilets and a shared kitchen, broadband . Off-road parking.

Situated near the A27, this location offers excellent transport links, making it accessible for those commuting from nearby towns and cities.

This is a rare opportunity to secure a piece of history while benefiting from modern conveniences. Whether you are looking to expand your business or start anew, this commercial space on Arundel Road is not to be missed.

Please check council for business rates.

Both parties bare own legal costs for agreements.



22 South Farm Road, Worthing, West  
Sussex, BN14 7AA  
01903 532225  
worthing@localagent.co.uk  
www.openhouseworthing.co.uk



Energy Efficiency Rating		
	Current	Potential
Very energy efficient - lower running costs		
(92 plus) <b>A</b>		
(81-91) <b>B</b>	87	87
(69-80) <b>C</b>		
(55-68) <b>D</b>		
(39-54) <b>E</b>		
(21-38) <b>F</b>		
(1-20) <b>G</b>		
Not energy efficient - higher running costs		
<b>England &amp; Wales</b>	EU Directive 2002/91/EC	